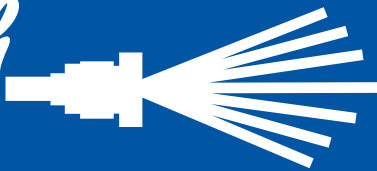


LORDCO

AUTO PARTS

Pro-Wash
Pressure Washers



pro-washpressurewashers.ca

2014/15 Pressure Washer Product Catalogue



Cold Water Pressure Washers

- 3 PW-2305G
- 3 PW-2305GI
- 3 PW-2705GI
- 3 PW-2705G
- 3 PW-2705GKI
- 4 Auto Start-Stop
- 4 PW-1400E
- 4 PW-1000E
- 4 PW-1500E
- 5 PW-2000E
- 5 PW-3000E
- 6 PW AR141
- 6 PW-2500G
- 7 PW-3500G
- 7 PW-4000G

Hot Water Pressure Washers

- 8 PW-2700GH
- 8 PW-3500GH
- 9 PW-1500EH
- 9 PW-2500EH
- 9 PW-3000EH
- 10 PW-2000NGH
- 10 PW-3000NGH



Pressure Washer Accessories

- 11 Quick Disconnect Spray Nozzles
- 11 Threaded Spray Nozzles
- 11 Soap Nozzle
- 12 Rotating Turbo Nozzles
- 12 Mole Nozzles
- 12 Sewer Cleaning Hose Assemblies
- 13 Suttner ST-1500
- 13 36" Industrial Gun & Wand Assembly
- 13 Industrial Suttner Lances
- 14 Fiberglass Telescoping Wands
- 14 Telescopic Wand Belt
- 14 Gutter Cleaner
- 15 General, AR, Cat pumps
- 16 Spring Rewind Hose Reels 100' 200'
- 16 Garden Hose Reels
- 16 Portable High and Low Pressure Reels
- 17 Brass Couplers
- 17 M22 Metric Couplers
- 17 Hi-Heat "O" Ring Couplers
- 17 Steel Nipples
- 17 M22 Metric Nipples
- 17 Pump Oil
- 18 Degreaser
- 18 Easy Clean
- 18 Black Wrapped Hose Assemblies
- 18 Blue Non-Mark Hose Assemblies
- 19 Wall Cleaner
- 19 Water Broom
- 19 Professional Flat Surface Cleaners
- 20 Pulsar 3 Unloader
- 20 Pump Protectors
- 20 Inline Strainer
- 20 Inlet Screen
- 20 Inline Strainer
- 21 Downstream Chemical Injector
- 21 Foamer with Tank
- 21 Upstream Chemical Injector
- 22 Ceiling & wall Mount Wash Boom
- 22 Pit Cleaner, Sludge Cart
- 23 Wet Sandblaster Kit Heavy Duty
- 23 Car Wash/Detail Accessories
- 23 Pressure Gauge
- 23 Cold Water Test Gauge Assembly

Pro-Wash pressure washers use top quality components and are designed to suit all users from consumer to industrial.

PW-2305G

Consumer Gas

- ✧ GC160 Honda Engine
- ✧ AR Pump SJV
- ✧ 2300 PSI @ 2.4 GPM



Features

- ✧ 25' Wire Braid Pressure Hose
- ✧ 36" Gun & Wand Assembly
- ✧ 3 High Pressure Nozzles
- ✧ 1 Soap Application Nozzle
- ✧ Chemical Injector
- ✧ Operating Instructions
- ✧ Warning Labels
- ✧ 2 year "Limited Warranty"
- ✧ Optional Hose Reel Kit

PW-2305GI

Consumer Gas

- ✧ GC160 Honda Engine
- ✧ AR Pump RMV Light Duty
- ✧ 2300 PSI @ 2.4 GPM

PW-2705G

Consumer Gas

- ✧ GC190 Honda Engine
- ✧ AR Pump SJV
- ✧ 2700 PSI @ 2.4 GPM



Included Accessories



Optional Hose Reel Kit



PW-2705GI

Consumer Gas

- ✧ GC190 Honda Engine
- ✧ AR Pump RMV Light Duty
- ✧ 2700 PSI @ 2.4 GPM

PW-2705GKI

Consumer Gas

- ✧ 7 HP/196cc Kohler Engine
- ✧ AR Pump RMV Light Duty
- ✧ 2700 PSI @ 2.4 GPM

PW-1000E

Industrial Electric

- ✧ 1.5 HP TEFC Electric motor
- ✧ 115 volt, 1 ph, 15 amp.
- ✧ General Pump
- ✧ 1000 PSI @ 2.1 GPM



PW-1400E

Industrial Electric

- ✧ 2 HP TEFC Electric motor
- ✧ 115 volt, 1 ph, 20 amp.
- ✧ General Pump
- ✧ 1400 PSI @ 2.1 GPM

PW-1500E

Industrial Electric

- ✧ 3 HP TEFC Electric motor
- ✧ 230 volt, 1 phase, 13 amp
- ✧ General Pump
- ✧ 1500 PSI @ 3 GPM



Auto Start-Stop

For electric pressure washers

PW 30-013M

Why Auto Start/Stop?

Auto Start/Stop will automatically shut down the pressure washer after the trigger on the gun has been released and then start up again as soon as the trigger is pulled. The operator can leave the pressure washer when the job is done without having to walk over to the machine and turn it on and off all day long, thus ensuring years of trouble free operation. One of the primary reasons for pump failure on pressure washers is leaving the unit running without the trigger on the gun being pulled. This recirculation of water in the pump will eventually get hot and when the trigger is pulled again, the cold water that enters the pump can crack the ceramic pistons as well as damage the seals.

Remember to ensure the unit is turned off at the end of the day!

Features

- ✧ 25' Wire Braid Pressure Hose
- ✧ 36" Gun & Wand Assembly
- ✧ 3 High Pressure Nozzles
- ✧ 1 Soap Application Nozzle
- ✧ Chemical Injector
- ✧ Operating Instructions
- ✧ Warning Labels
- ✧ 2 year "Limited Warranty"
- ✧ Optional Hose Reel Kit

Included Accessories



PW-2000E

Industrial Electric

- ✧ 5 HP TEFC Electric Motor
- ✧ 230 volt, 1 phase, 22 amp
- ✧ General Pump
- ✧ 2000 PSI @ 3.5 GPM



Features

- ✧ 50' Wire Braid Pressure Hose
- ✧ 36" Gun & Wand Assembly
- ✧ 3 High Pressure Nozzles
- ✧ 1 Soap Application Nozzle
- ✧ Chemical Injector
- ✧ Operating Instructions
- ✧ Warning Labels
- ✧ 2 year "Limited Warranty"
- ✧ Optional Hose Reel Kit

Included Accessories



PW-3000E

Industrial Electric

- ✧ 7 1/2 HP TEFC Electric Motor
- ✧ 230 volt, 3 phase, 21 amp
- ✧ General Pump
- ✧ 3000 PSI @ 4 GPM



Optional Hose Reel Kit



PW AR141

Consumer Electric

- ✧ 1600 PSI @ 1.6 GPM
- ✧ Automatic Start/Stop
- ✧ 20' Pressure Hose
- ✧ 120V 18 amps
- ✧ Weight 18 lbs.



Features

- ✧ Trigger Gun & Wand
- ✧ Adjustable Spray Nozzle
- ✧ Quick Disconnects
- ✧ Foam Spray Attachment
- ✧ Lance Holder Cart Attachment

PW-2500G

Industrial Gas

- ✧ GX200 Honda Engine
- ✧ General Pump
- ✧ 2500 PSI @ 3 GPM
- ✧ 50' Wire Braid Pressure Hose



Features

- ✧ 36" Gun & Wand Assembly
- ✧ 3 High Pressure Nozzles
- ✧ 1 Soap Application Nozzle
- ✧ Chemical Injector
- ✧ Operating Instructions
- ✧ Warning Labels
- ✧ 2 year "Limited Warranty"
- ✧ Optional Hose Reel Kit

Included Accessories



PW-3500G

Industrial Gas

- ✧ GX390 Honda Engine
- ✧ General Pump
- ✧ 3500 PSI @ 4 GPM
- ✧ 50' Wire Braid Pressure Hose



Features

- ✧ 36" Gun & Wand Assembly
- ✧ 3 High Pressure Nozzles
- ✧ 1 Soap Application Nozzle
- ✧ Chemical Injector
- ✧ Operating Instructions
- ✧ Warning Labels
- ✧ 2 year "Limited Warranty"
- ✧ Optional Hose Reel Kit

Included Accessories



PW-4000G

Industrial Gas

- ✧ GX390 Honda Engine
- ✧ General Pump
- ✧ 4000 PSI @ 4 GPM
- ✧ 50' Wire Braid Pressure Hose



Optional Hose Reel Kit



PW-2700GH

Industrial Gas Engine

- ✧ EX21 7 HP Subaru Engine
- ✧ General Pump
- ✧ 2700 PSI @
2.3 GPM



PW-3500GH

Industrial Gas Engine

- ✧ GX390 Honda Engine
- ✧ General Pump
- ✧ 3500 PSI @
3.8 GPM



Features

- ✧ Adjustable temperature control
- ✧ 50' Wire Braid Pressure Hose
- ✧ 48" Gun & Wand Assembly
- ✧ 3 High Pressure Nozzles
- ✧ 1 Soap Application Nozzle
- ✧ Chemical Injector
- ✧ Operating Instructions
- ✧ Warning Labels
- ✧ 2 year "Limited Warranty"
- ✧ Optional Hose Reel Kit

Included Accessories



Optional Hose Reel Kit



PW 1500EH

Industrial Electric Oil Fired

- ✧ 2 H.P. 120 volt, single phase
- ✧ General Pump
- ✧ 1500 PSI @ 2.0 GPM
- ✧ Time Delay Shutdown
- ✧ Powder Coated Coil Wrap



PW 2500EH

Industrial Electric Oil Fired

- ✧ 5 H.P. 230 volt, single phase
- ✧ General Pump
- ✧ 2500 PSI @ 3.0 GPM
- ✧ Time Delay Shutdown
- ✧ Stainless Steel Coil Wrap



PW 3000EH

Industrial Electric Oil Fired

- ✧ 6 H.P. 230 volt, 1 phase,
- ✧ General Pump
- ✧ 3000 PSI @ 3 GPM
- ✧ Time Delay Shutdown
- ✧ Stainless Steel Coil Wrap

Features

- ✧ Adjustable temperature control
- ✧ 50' Wire Braid Pressure Hose
- ✧ 48" Gun & Wand Assembly
- ✧ 3 High Pressure Nozzles
- ✧ 1 Soap Application Nozzle
- ✧ Chemical Injector
- ✧ Operating Instructions
- ✧ Warning Labels
- ✧ 2 year "Limited Warranty"
- ✧ Optional Hose Reel Kit

Included Accessories



Optional Hose Reel Kit



PW-2000NGH

Industrial Electric Natural Gas Fired

- ✧ 6 H.P. 230 volt, single phase
- ✧ General Pump
- ✧ 2000 PSI @ 3.8 GPM
- ✧ Auto Shut down



Features

- ✧ Adjustable Temperature Control
- ✧ Electronic Ignition
- ✧ Stainless Steel Coil Wrap
- ✧ 50' Wire Braid Pressure Hose
- ✧ 48" Gun & Wand Assembly
- ✧ 3 High Pressure Nozzles
- ✧ 1 Soap Application Nozzle
- ✧ Chemical Injector
- ✧ Operating Instructions
- ✧ Warning Labels
- ✧ 2 year "Limited Warranty"

Included Accessories



PW-3000NGH

Industrial Electric Natural Gas Fired

- ✧ 7.5 H.P. 230 volt, single phase
- ✧ General Pump
- ✧ 3000 PSI @ 3.9 GPM
- ✧ Auto Shut down

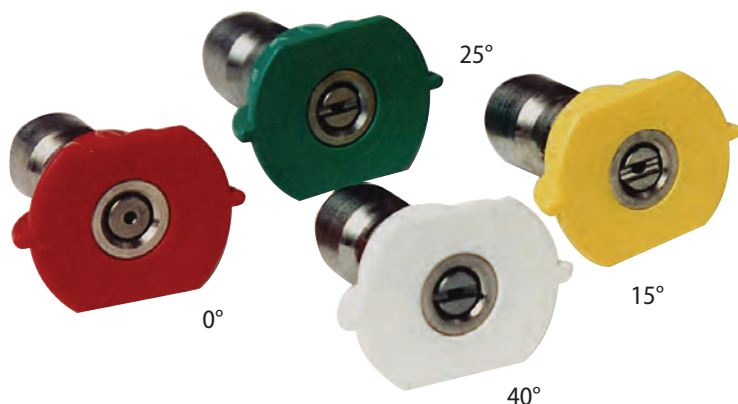


Optional Wall Mount Hose Reel



Quick Disconnect Spray Nozzles

- ✧ 4000 PSI
- ✧ Fits most 1/4" Quick Disconnect couplers
- ✧ Colour coded for angle of spray
- ✧ Stainless steel body



Part Number	Description		
PW 12803500	#3.5	0 Degree Spray	Red
PW 12803515	#3.5	15 Degree Spray	Yellow
PW 12803525	#3.5	25 Degree Spray	Green
PW 12803540	#3.5	40 Degree Spray	White
PW 12804000	#4.0	0 Degree Spray	Red
PW 12804015	#4.0	15 Degree Spray	Yellow
PW 12804025	#4.0	25 Degree Spray	Green
PW 12804040	#4.0	40 Degree Spray	White
PW 12804500	#4.5	0 Degree Spray	Red
PW 12804515	#4.5	15 Degree Spray	Yellow
PW 12804525	#4.5	25 Degree Spray	Green
PW 12804540	#4.5	40 Degree Spray	White
PW 0035	Nozzle Pack, #3.5 – Set of 4		
PW 0040	Nozzle Pack, #4.0 – Set of 4		
PW 0045	Nozzle Pack, #4.5 – Set of 4		

Threaded Spray Nozzles

- ✧ 4000 PSI
- ✧ 1/4" NMPT
- ✧ Stainless steel body

Part Number	Description	
PW01403500	#3.5	0 Degree Spray
PW01403515	#3.5	15 Degree Spray
PW01403525	#3.5	25 Degree Spray
PW01403540	#3.5	40 Degree Spray
PW01404000	#4.0	0 Degree Spray
PW01404015	#4.0	15 Degree Spray
PW01404025	#4.0	25 Degree Spray
PW01404040	#4.0	40 Degree Spray
PW01404500	#4.5	0 Degree Spray
PW01404515	#4.5	15 Degree Spray
PW01404525	#4.5	25 Degree Spray
PW01404540	#4.5	40 Degree Spray



Soap Nozzle

- ✧ Brass quick disconnect nozzle
- ✧ 65 Degree
- ✧ 40 Nozzle size

PW16540



Rotating Turbo Nozzles

- ✧ Maximum 3600 PSI
- ✧ 190 Deg F
- ✧ Made in Germany

Part Number	Orifice Size
PW 200357540	4.0
PW 200357550	5.0
PW 200357570	7.0

- ✧ Maximum 5000 PSI
- ✧ 190 Deg F
- ✧ Made in Germany

Part Number	Orifice Size
PW 200456540	4.0
PW 200456550	5.0
PW 200456570	7.0



Mole Nozzles

Rotating Sewer Nozzle

- ✧ 3000 PSI
- ✧ Two rotating back jets
- ✧ Adds extra agitation
- ✧ 1/4" FNPT

PW 01918



Drain Nozzles

- ✧ 4100 PSI
- ✧ One forward / Three Back jets
- ✧ Stainless Steel



Part Number	Description
PW121370170	1/4" FNPT
PW122370170	1/8" FNPT
PW123065187	3/8" FNPT



Call for pricing on these specialty nozzles.

Sewer Cleaning Hose Assemblies

- ✧ 1/4" MNPT ends
- ✧ Maximum 4350 PSI @ 212 Deg F
- ✧ Tough poly-ether cover
- ✧ Very flexible

Part Number	Length (ft)
PW 084350050	50
PW 084350100	100
PW 084350150	150
PW 084350200	200



Suttner ST-1500

- ✧ 4000 PSI
- ✧ 12 GPM
- ✧ 300 Deg F
- ✧ 3/8" FNPT Inlet
- ✧ 1/4" FNPT Outlet

PW 01205

Repair Kit: **PW202000044**

PW 81021602: Trigger Gun (Made in China)



36" Industrial Gun & Wand Assembly

- ✧ 4000 PSI
- ✧ 12 GPM
- ✧ 300 Deg F
- ✧ 3/8" QD plug inlet
- ✧ 1/4" QD plug outlet
- ✧ 36" Lance

PW 100036 - Made in Germany

PW 100036C - Made in China



Industrial Suttner Lances

- ✧ Maximum 5800 PSI
- ✧ Rolled threads not cut
- ✧ 1/4" MNPT ends
- ✧ Zinc plated
- ✧ Insulated grips



Part Number	Length
PW5170D24	24"
PW5170D36	36"
PW5170D48	48"
PW5170D60	60"
PW5170D79	79"



Fiberglass Telescoping Wands

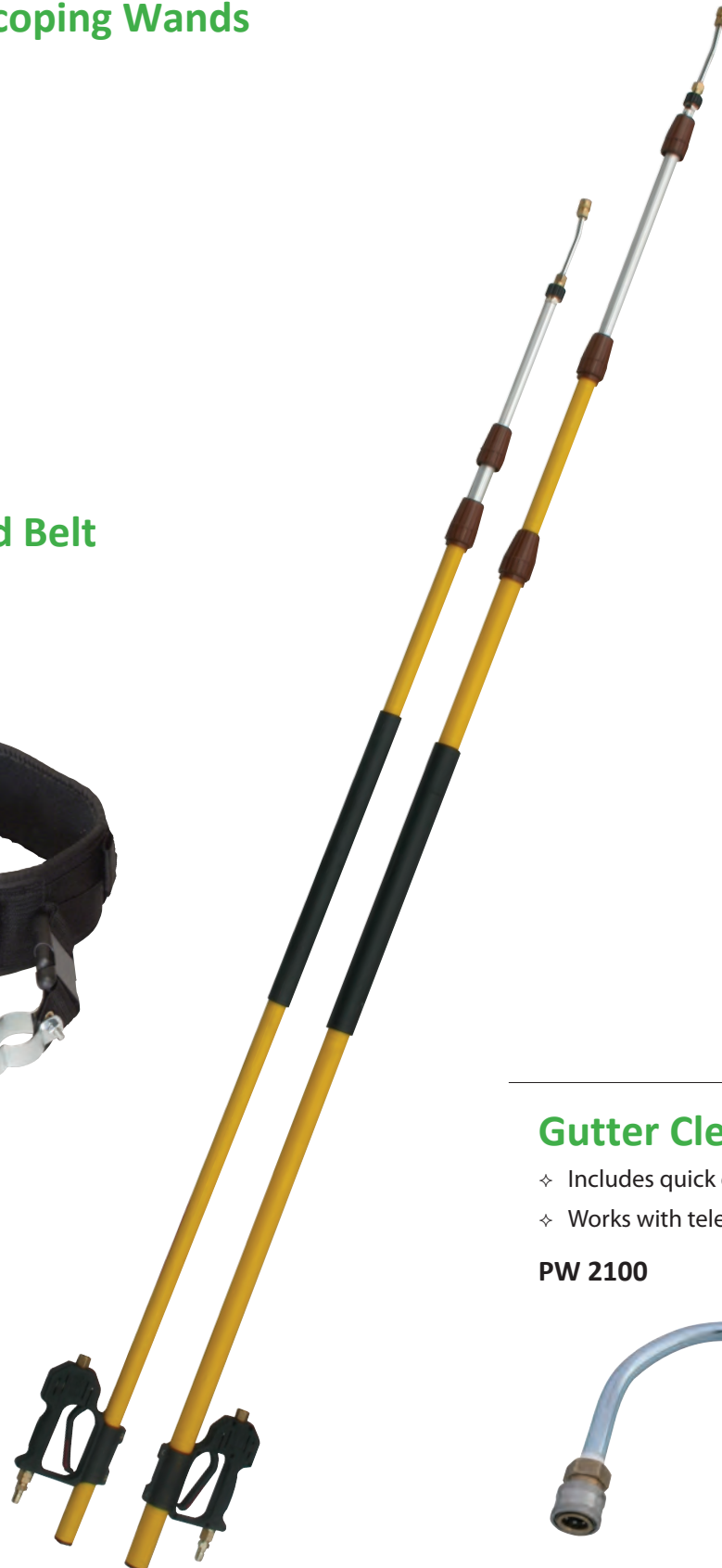
- ✧ 3000 PSI
- ✧ 200 Deg F
- ✧ Quick disconnect nozzle
- ✧ Extendable lances
- ✧ Twist lock design

Part Number	Length
PW 0111518	18 Foot
PW 0111524	24 Foot

Telescopic Wand Belt

- ✧ Belt

PW 0111518B



Gutter Cleaner

- ✧ Includes quick disconnect fittings
- ✧ Works with telescopic wand

PW 2100



PUMP REPLACEMENTS (come with unloader and inlet/outlet fittings ready to bolt-on)



GENERAL PUMPS

PW TT2530	2.8 G.P.M. @ 2500 PSI, GAS ENGINE FLANGE
PW TX1510G8	4 G.P.M. @ 3500 PSI, GAS ENGINE FLANGE
PW WW965	4 G.P.M. @ 4000 PSI, GAS ENGINE FLANGE

5.5 or 6.5 H.P. INDUSTRIAL DUTY
13 H.P. EXTREME DUTY
13 H.P. EXTREME DUTY



AR PUMPS

PW RMV25G30 PW	2.5 G.P.M. @ 2500 PSI, GAS ENGINE FLANGE
SJV25G27D PW	2.5 G.P.M. @ upto 2700 PSI, GAS ENGINE FLANGE 3
RCV3G27D PW	G.P.M. @ 2700 PSI, GAS ENGINE FLANGE
RRV4G40	4 G.P.M. @ 4000 PSI, GAS ENGINE FLANGE

5 or 6 H.P. CONSUMER SERIES 5 or 6
H.P. CONSUMER SERIES 5.5 or 6.5
H.P. INDUSTRIAL DUTY 13 H.P.
INDUSTRIAL DUTY



CAT PUMPS

PW 3DX30GSI	3 G.P.M. @ 2500 PSI, GAS ENGINE FLANGE
PW 66DX40G1I	4 G.P.M. @ 4000 PSI, GAS ENGINE FLANGE

6.5 H.P. INDUSTRIAL DUTY
13 H.P. EXTREME DUTY

Hose Reels

- ✧ Hand crank
- ✧ Rigid base
- ✧ For 3/8" R1 Hose
- ✧ Replacement swivels available #4-020361



Part Number	Description
PW 02755050	Max 200 ft 3/8" R1 Hose
PW 02755030	Max 100 ft 3/8" R1 Hose

Garden Hose Reels

- ✧ Made in USA
- ✧ 150' x 5/8" or 100' x 3/4" garden hose capacity
- ✧ Die cast aluminum
- ✧ Adjustable braking system
- ✧ Powdercoat finish

Part Number	Description
PW 0275GH164PD	Perpendicular mount
PW 0752GH164PL	Parallel mount
PW 0752GH168WG	4 wheeled portable cart
PW 0752GH164CT	wheeled portable cart



Wall or
Surface Mount



Portable

Portable High and Low Pressure Reels

- ✧ Powder coat finish
- ✧ Removable handle

PW 0275200DM



Spring Rewind Hose Reels

Made in USA

PW 0275N350

- ✧ 50' x 3/8" hose capacity
- ✧ 3000 P.S.I. pressure rating

PW 0275N3100

- ✧ 100' x 3/8" hose capacity
- ✧ 3000 P.S.I. pressure rating



Brass Couplers



Part Number	Description
PW 2000	1/4" FNPT
PW 2001	1/4" MNPT
PW 2002	3/8" FNPT
PW 2003	3/8" MNPT

Steel Nipples



Part Number	Description
PW 2004	1/4" FNPT
PW 2005	1/4" MNPT
PW 2005	3/8" FNPT
PW 2007	3/8" MNPT

M22 Metric Couplers



Part Number	Description
PW 2113	3/8" FNPT
PW 21131	3/8" MNPT

M22 Metric Nipples



Part Number	Description
PW 2114	3/8" FNPT
PW 2115	3/8" MNPT

Hi-Heat "O" Ring Couplers

Part Number	Description
PW 0119	1/4"
PW 0121	3/8"
PW 0119P5 5-pack	1/4"
PW 0121P5 5-pack	3/8"



General Pump Oil

16 oz.
For General pumps

PW 8005GP



AR Pump Oil

4.5 oz/250 ml.
For AR pumps

PW 8007

CAT Pump Oil

16 oz.
For Cat pumps

PW 8004

Degreaser

- ✧ This highly concentrated caustic liquid is ideal for degreasing engines and heavy equipment.
- ✧ Designed for use with hot high pressure washers and steam cleaners it is also effective with cold water pressure washers.
- ✧ Degreaser is a biodegradable product and is safe for use on steel, iron, stainless steel and concrete surfaces.

Part Number	Description
PW 400004	4 litre
PW 400020	20 litre



Easy Clean

- ✧ E-Z Clean is a concentrated general purpose cleaner ideal for use on painted aluminum and vinyl siding as well as concrete, brick, painted woodwork, plastics, rubber, vehicles, fabrics etc.
- ✧ It contains no caustic or acid and is biodegradable.

Part Number	Description
PW 300004	4 litre
PW 300020	20 litre



Black Wrapped Hose Assemblies

- ✧ Comes with quick disconnect couplers
- ✧ Bend restrictors
- ✧ Type R1, 4000 Maximum PSI

Part Number	Length (ft)
PW 020625-F	25
PW 020650-F	50
PW 020699-F	100



Blue Non-Marking Hose Assemblies

- ✧ Comes with quick disconnect couplers
- ✧ Bend restrictors
- ✧ Type R1, 4000 Maximum PSI

Part Number	Length (ft)
PW 02033450B-F	50
PW 02033498B-F	100



Professional Flat Surface Cleaner 12"

- ✦ With brush skirt
- ✦ Maximum 3500 PSI @ 180° F
- ✦ Fixed height
- ✦ Rotating swivel arm
- ✦ 30% faster than regular wand and no overspray

Part Number	Diameter
-------------	----------

PW 30585-12GP	12"
---------------	-----



Professional Flat Surface Cleaner 20"

- ✦ 20" Cleaning Path
- ✦ Heavy-Duty Anodized
- ✦ Aluminum components
- ✦ Rugged ABS Cover

PW 585-20B



Stainless Steel Surface Cleaner

PW MMFLOR520

- ✦ 20" Cleaning Path
- ✦ Includes Brush Skirt
- ✦ Stainless Steel Castors
- ✦ Self Lubricated SS Swivel with SS bearings
- ✦ Made in Switzerland



Water Broom

- ✦ 4 nozzles overlapping
- ✦ With casters
- ✦ 4000 PSI
- ✦ Comes with 4 wide angle spray nozzles

PW 100870



Pulsar 3 Unloader

- ✧ 4350 PSI
- ✧ 8 GPM
- ✧ Pressure actuated
- ✧ Blue spring with adjustment knob
- ✧ 3/8" FNPT inlet / outlet / bypass

PW 3020



Inline Strainer

- ✧ Removable Screen
- ✧ Clear view
- ✧ 1/2" MNPT x 3/4" GHT
- ✧ Serviceable Filter
- ✧ Replaceable sight glass
- ✧ Garden hose fitting attached

PW 100649



Pump Protectors

- ✧ Prevents high heat from damaging pump
- ✧ Dumps hot water out

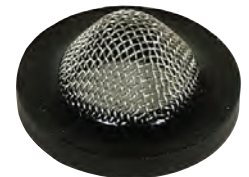
Part Number	Description
PW 300816	3/8" MNPT, 140° F
PW 30082	1/2" MNPT, 140° F



Inlet Screen

- ✧ Garden hose
- ✧ Rubber gasket with stainless mesh
- ✧ 3/4" S.S. GHT

PW 1902



Inline Strainer

- ✧ 145 PSI
- ✧ 1/2" MNPT x FNPT
- ✧ Removable filter
- ✧ Diecast metal housing with plastic cap

PW 1908



Downstream Chemical Injector

- ✧ Siphon hose
- ✧ Quick disconnects
- ✧ Attaches to outlet of pressure washer
- ✧ Low pressure soap
- ✧ Requires soap tip
- ✧ Chemicals don't go through pump
- ✧ 2.6 – 4 GPM

PW 011191-2.1



Upstream Chemical Injector

- ✧ Siphon hose
- ✧ Attaches to inlet of pressure washer
- ✧ Apply soap at high pressure
- ✧ 3/4" FGH inlet x 3/4" MGH outlet
- ✧ 1.5 – 4 GPM

PW 130264-1



Foamer with Tank and Gun

- ✧ 1/4" MNPT
- ✧ Dispense chemicals in a thick foam
- ✧ Increase dwell time
- ✧ Adjustable chemical control - 2 to 8%
- ✧ 2 L tank
- ✧ 176 Deg F
- ✧ Stainless internal foam turbulator

PW FLG12



(Foamer only also available PW-1-000FML01)



Trigger gun with 12" lance

Car Wash Booms



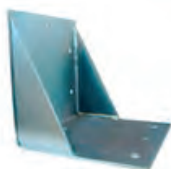
- ✧ 3000 PSI maximum
- ✧ 5.5' radius, 11' swing diameter 3/8" FNPT inlet
- ✧ 360° ceiling mount/180 Ceiling Mount
- ✧ Hose not included
- ✧ Available in 7' and 8' radius.

PW OHB180

180 degree Wall Mount w/bracket

PW OHB360

360 degree swivel Ceiling mount



Pit Cleaner

Removes water laden sludge from collection pits or tanks.
Produces 11 times more suction volume than pressure washer output.
(ie; 4 GPM pressure washer will suck 44 GPM of sludge)
7' PVC wand and gun assembly.
20' x 1-12" suction hose with camlock.



PW 30-575

Sludge Cart

Sludge from the pit cleaner can be deposited into the sludge bag. Water permeates leaving the sludge to be disposed of.
Hand truck design with pneumatic tires.
Comes with 5 bags.

PW 30-580



Suction Head

Head only, no fittings or nozzle

PW 20003650



Heavy Duty Wet Sandblaster Kit

- ✧ Maximum 4000 PSI
- ✧ For paint, graffiti or rust removal
- ✧ Dust free
- ✧ Brass body with tungsten carbide mixing chamber
- ✧ 25' x 1/2" injector hose and metal siphon
- ✧ For use with sand, glass bead, baking soda and other fine abrasives
- ✧ Carbide Nozzle with flow control
- ✧ 1/4" MEG nozzle sold separately (specify gpm and psi)



PW-011212

Car Wash/Detail Accessories

Hose Holder - Stainless Steel. Holds 120 ft of 1/2" hose or 90 ft of 3/4" hose. 13.75" x 6" x 7.75"
PW 11006

Wall Mount Wand holders - Stainless Steel
PW WH2506 - 6"
PW WH2517 - 17"
PW WH2522 - 22"



Car Mat Clamp
PW AP260610



Cold Water Test Gauge Assembly

- ✧ Connect in-line with pressure washer hose to gain accurate reading of working and spike pressure
- ✧ Glycerine filled
- ✧ 0 - 5000 PSI
- ✧ 3/8" QD fittings

PW 0600

Pressure Gauge

- ✧ Lower mount
- ✧ 1/4" MNPT
- ✧ Glycerine filled
- ✧ 0 - 5000 PSI

PW 5020F





20186-113B Ave.
Maple Ridge, B.C.

800.595.2632

pro-washpressurewashers.ca

Pro-Wash
Pressure Washers

